

April 2026



1974-2026

# Tar Heel Tailings

*A newsletter for Gem and Mineral enthusiasts in and around the Raleigh, NC area.*

## **A Quick Message From The THGMC President**

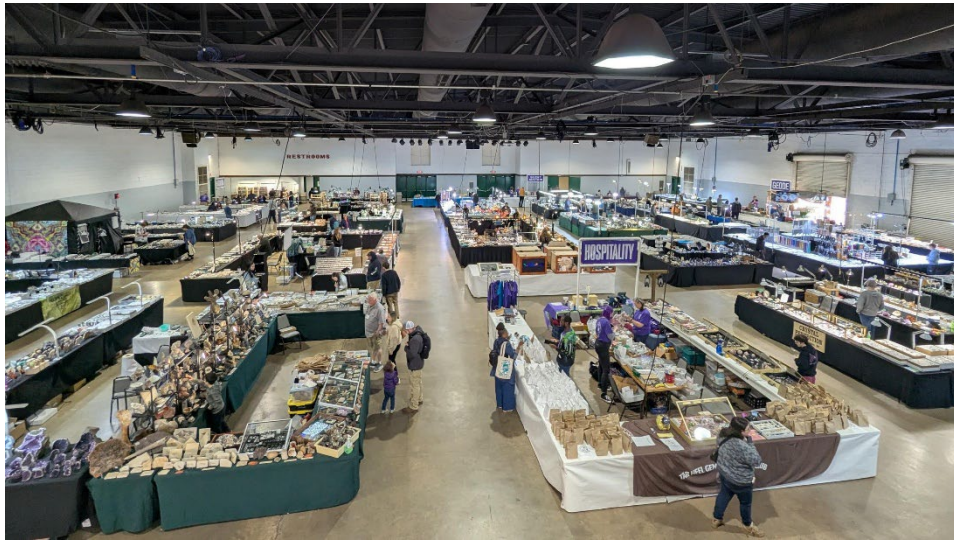
Greetings, we had a great show with increased attendance and compliments from our vendors.

Seeing all the fellowship and increased volunteer participation was nice, along with being fed on setup and down!

Looking forward to next year's show already, I had a great time and hope everyone else did too.

Thomas Beach

## Tar Heel Gem and Mineral Club's Annual Show 2026



*THGMC Annual Show 2026: Photo and article by Editor Patrick Lahr*

The Tar Heel Gem and Mineral Club's Annual Show over the last weekend of March was a great success. The event included 34 vendors, 6 display boxes, a geode cutting station and more. Behind the scenes an army of volunteers helped make the show possible, setting everything up on Thursday afternoon and helping with tear down late into Sunday evening.

Attendees found no shortage of activities to engage in. At the hospitality booth, grab bags prepared by club members offered all sorts of affordable goodies. Vendors sold everything from rough stones to museum quality fossils. Silent auction offered folks a way to support the club directly and maybe get a steal of a deal in the process.



March 2026 Monthly  
Meeting



**Door Prize Drawing: Green Calcite- Sonya**

**Door Prize Drawing: Pyrite-Susan**

Monthly Meeting: March 17, 2026

Time 7:00 pm

Topics included:

- Possible Field trip to Portis Gold Mine (Near Hollister, NC): Co-Field Trip Coordinator Adam Hogan will look at future dates in May/June and schedule trip
- Annual Show 2026 general information and sign up as volunteer
- Grab bags for Hospitality Booth/Annual Show- created 396 bags
- Meeting adjourned 8:45 pm

**Tar Heel Gem & Mineral Club, Inc. 2026 Board**

P.O. Box 33783  
Raleigh, NC 27536

Thomas Beach – President

Adam Hogan – Vice President

Beverly House– Treasurer

Kelly Roney – Secretary

Lynne Kuzeff – Member At Large

Cyndy Hummel – Member At Large

Craig Downes – Technology Lead

**Please contact any member of the board through  
tarheelgemmineralclub@yahoo.com**

## Monthly Mineral: Fluorite

By Editor: Patrick Luhr



*Purple Fluorite on Granite from Harnett County; on display at the Carnegie Museum of Natural History*

Fluorite is April's monthly mineral! This halide mineral is very popular with collectors for a number of reasons, from its vivid color to its habit of forming amazing crystal forms. Chemically, Fluorite is a salt of the gaseous element Fluorine. Originally described as Fluorspar in 1530 by early German Mineralogist Georgius Agricola, it has played a

very important role in science, lending its name to the property of Fluorescence, the element Fluorine, and being the representative mineral of 4 on the Mohs scale.

Fluorite in its pure form is clear, though it's rarely found in this state. It has the unique ability to be tinted by metallic impurities, and can also be tinted by radiation, and defects in its crystal lattice. This has made it probably the most colorful mineral out there. The most common color is Purple and Green, but it can be almost any color of the rainbow.

Fluorite occurs at several sites in North Carolina. Several granite formations have produced specimens, notably the Lillington Pluton in Harnett County has produced a large amount of beautiful purple and green samples. Samples have also been historically found at the Foote Mine in Cleveland County, NC, and the Tungsten Queen Mine in Vance County.

Tar Heel Updates

**Treasurer report:** We are in good standing and all our bills are paid and paid on time.

*Beverly House, Treasurer*

**Field trips:**

Castle Hayne, North Carolina: April 24, 2026, Fossil Trip

Portis Gold Mine, Hollister, NC:- May or June 2026- Date to Be Determined

Old Collections Meet New Rules

Patrick Luhr, Patrick Luhr- At the request of the THGMC Board

Old collections can be a lot of fun. Going through pallets, never knowing what will be in the next one. Sorting through buckets, finding gorgeous crystals buried in the rough. Occasionally the age of these collections can show, and at times the legality and safety of these old materials has changed, and whoever has received the old collections will have to know how to handle that. The following list provides some common unsafe or legally dubious materials and how to handle them.

Material	Traits	Handling
Native American Artifacts	Arrowheads, shards of hardened clay, beads or "worked" stone	NC law prohibits the sale of these, and encourages transfer to museums
Uranium Minerals	Commonly green or yellow and strongly fluorescent green, or VERY dense dark material	Store in airtight bag, and contact geologist, may be valuable in right hands
Asbestiform Minerals	Fibrous, will look like hair, often green or white.	Store in airtight or container, carefully clean dust with wet cloth

**The Tar Heel Gem and Mineral Club asks all members to check their collections and consult with us before the donation is made or remove any of the listed materials before making donation to the club**

## Vug Sites

**Tar Heel Gem and Mineral Club**- These are the official sites for the Tar Heel Gem & Mineral Club.

<https://www.facebook.com/tarheelgemandmineralclub>

<https://www.tarheelclub.org/>

**The Southeastern Federal Mineral Society (SFMS) Lodestar Newsletter**- The Southeast Federation includes clubs and societies mostly in the region east of the Mississippi River and South of a line following the northern borders of Tennessee and North Carolina. <https://www.southeastfed.org/newsletter>

**Carolina Geological Society**- This site provides numerous downloadable field trip guidebooks, maps, and charts of the Carolinas. It will prove to keep any avid rockhound busy for years. <https://www.carolinageologicalsociety.org/>

**Rock and Gem Magazine** -Leading magazine for lapidary and mineral hobbyists. <https://www.rockngem.com/>

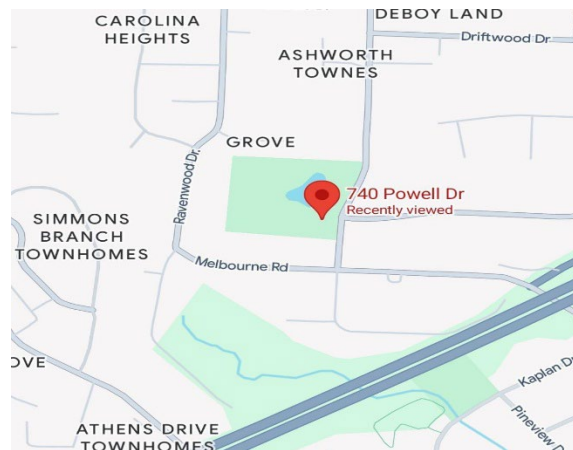
**Geological Trail Guide for Falls Lake Area**- Covers the area between Falls Lake Dam to the Eno River, created by Phil Bradley with the North Carolina Geological Survey (NCGS). [http://www.ncgeology.com/falls\\_lake\\_geology/pages/TrailGuide\\_FallsLake\\_home.html](http://www.ncgeology.com/falls_lake_geology/pages/TrailGuide_FallsLake_home.html)

**Geological Trail Guide for Eno River Area** -created by Phil Bradley with the North Carolina Geological Survey (NCGS). [http://www.ncgeology.com/pages/Index\\_eno.html](http://www.ncgeology.com/pages/Index_eno.html)

**Interactive geology maps** - published by the NCGS, include detailed maps of North Carolina and a rock survey of downtown Raleigh buildings. <https://www.deq.nc.gov/about/divisions/energy-mineral-and-land-resources/ncgs-publications/interactive-geologic-maps>

**MinDat** - Open database for rocks, minerals, and mines from around the world. <https://www.mindat.org/>

The Tar Heel Gem and Mineral Club, Inc. was formed in 1974 as a nonprofit educational organization for people who enjoy the lapidary arts, earth sciences, and related subjects. The main objectives of the club are to investigate, preserve, and share knowledge of rocks, minerals, and precious stones, and to promote interest in mineralogy, paleontology, earth sciences, and lapidary techniques, among club members and among the public. The club pursues these goals through publications, meetings, lectures, field trips, exhibits, demonstrations, and other activities.



### NEXT MEETING

Tuesday, April 21, 2026 at 7:00 PM

Powell Drive Community Center

740 Powell Drive, Raleigh, NC 27606



1974-2026

